

maxiPLY

BS1088 Barrier Ply with Advanced Zecore®

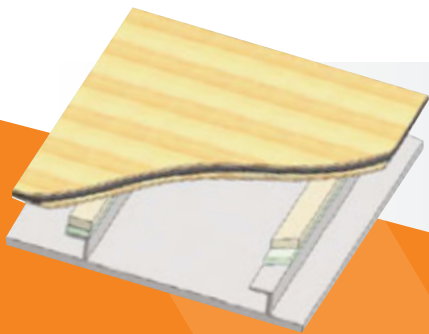
MaxiPly is a laminated acoustic panel, which provides higher noise reduction than commonly used materials such as plywood or composite panels. With two layers of BS1088 Marine Ply laminated each side of a constrained acoustic layer (ZeCore), MaxiPly behaves as a balanced constrained layer, significantly reducing noise transmission through decks, bulkheads, floors and partitions, while increasing guest privacy between cabins.



MaxiPly Advantages:

- Excellent low-frequency noise reduction and a constant increase in performance as the frequency increases, with no dips within the speech range.
- Increased transmission loss values (reduction in noise level through the material) especially in the speech range of 500 – 2500 Hz
- Unlike other PVC cores, MaxiPly's "ZeCore" is made with a high-quality polyolefin resin, which does not use oil as an activator.
- As a result, ZeCore can withstand a full 72 hour boil / peel test, as per BS1088 marine ply and is guaranteed not to be prone to oil migration over time
- With the addition of a fire retardant treatment, ZeCore passes IMO Res. A653(161) for fire resistance and self extinguishing properties.

Used in conjunction with Sylomer or Regufoam, as a floating interior, the use of MaxiPly significantly lowers noise and vibration levels within the vessel interior in the most weight efficient manner.



Typical Product Properties

- Plywood Species: Gaboon/Okoume
- Ply Thickness (mm): 4, 6, 9 (+/- 0.5mm)
- Specific Gravity (Core): 2.0 ASTM D792
- Plywood Grade: BS 1088
- Rating According to: ASTM E413-87
- Sheet Size (mm) 2440 x 1220 Untrimmed
- Sheet Size (mm) 2400 x 1200 Trimmed

Maxi Ply Standard Grades for Bulkhead Applications

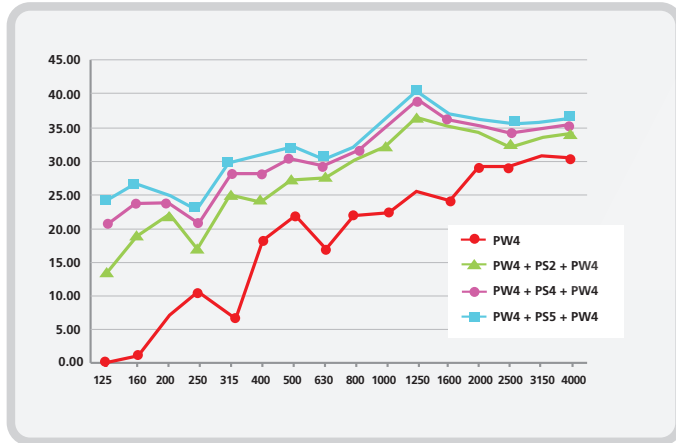
Grade	Thickness mm	Weight Kg/m ²	STC (125-4000 Hz)
MP4/2/4	10	7.6	30
MP4/4/4	12	11.6	33
MP4/5/4	13	13.6	34
MP6/2/6	14	9.4	29
MP6/4/6	16	13.4	32
MP6/5/6	17	15.4	33

MaxiPly Standard Grades for Sole Applications

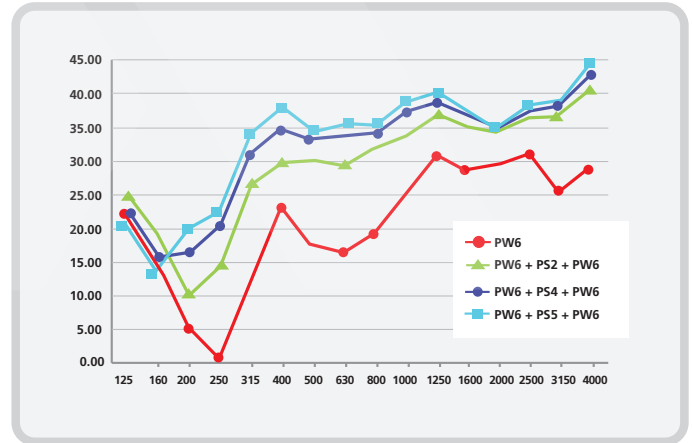
MP9/2/9	20	12.1	31
MP9/4/9	22	16.1	34
MP9/5/9	23	18.1	35

maxiPLY / Acoustic Specifications

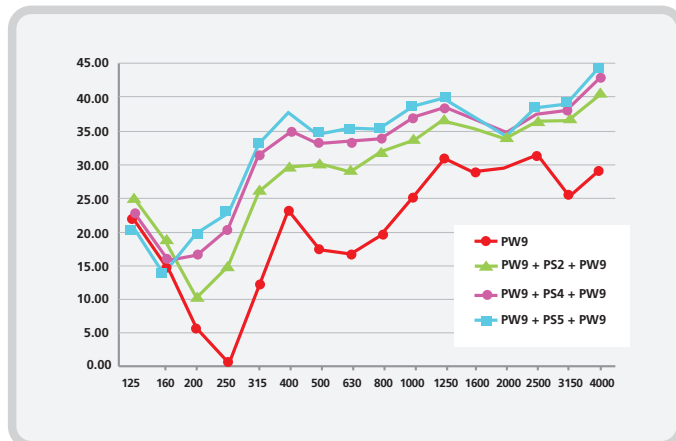
STC Values for MaxiPly 4mm BS1088 Marine Ply laminated each side of - 2mm (4kg), 4mm (8kg) and 5mm (10kg) Zecore®.



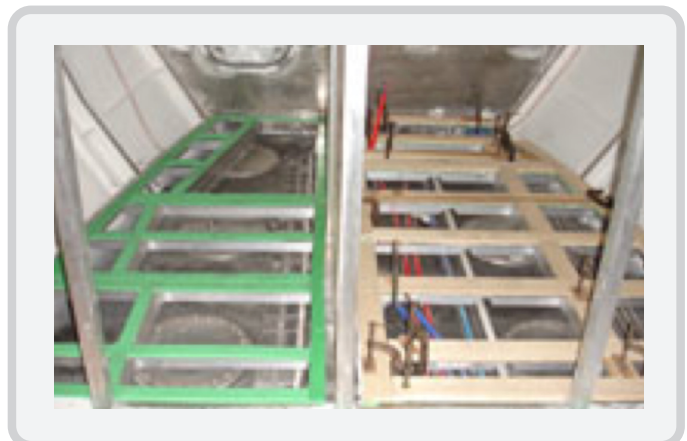
STC Values for MaxiPly 6mm BS1088 Marine Ply laminated each side of - 2mm (4kg), 4mm (8kg) and 5mm (10kg) Zecore®.



STC Values for MaxiPly 9mm BS1088 Marine Ply laminated each side of - 2mm (4kg), 4mm (8kg) and 5mm (10kg) Zecore®.



MaxiPly (9/5/9) Sole isolated off a steel and timber deck using Sylomer L-12 or Regufoam 300.



Now Available NEW MaxiPly-Lite: Super Lightweight BS1088 Marine Ply with Zecore®.
15-20% lighter than normal ply.



Australia: T: +61 2 99708251 F: +61 2 99708261 PO Box 159 Narrabeen, Sydney 2101, Australia. ABN 61126144563
Taiwan: T: +886 7 5262538 F: +886 7 5367267 62, Lane 939, Zhonghua 5th Rd, Kaohsiung, 806 ROC. BN 28415938
China Agent MCA: T: +86 756 3615685 F: +86 756 3615685 Rm101 Bld11 Hai Yun, Horizon Cove, 333 Jin Tang Rd, Zhuhai City

www.tcmaxis.com

Casey & Cooper Pty Ltd - Trading As TcMaxis - ABN 61 126 144 563

Specifications are subject to change without notice. The data listed on this data sheet are typical or average values conducted by independent laboratories or by the manufacturer. They are indicative only of the results obtained in such tests and should not be considered as guaranteed maximums or minimums. Materials must be tested under actual service conditions to determine their suitability for a particular purpose.